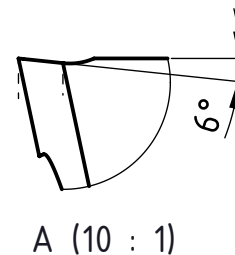
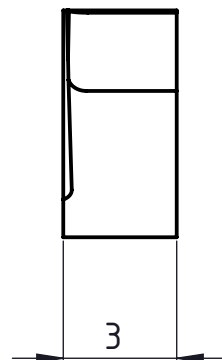
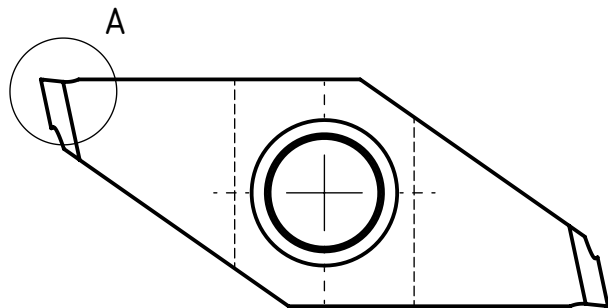


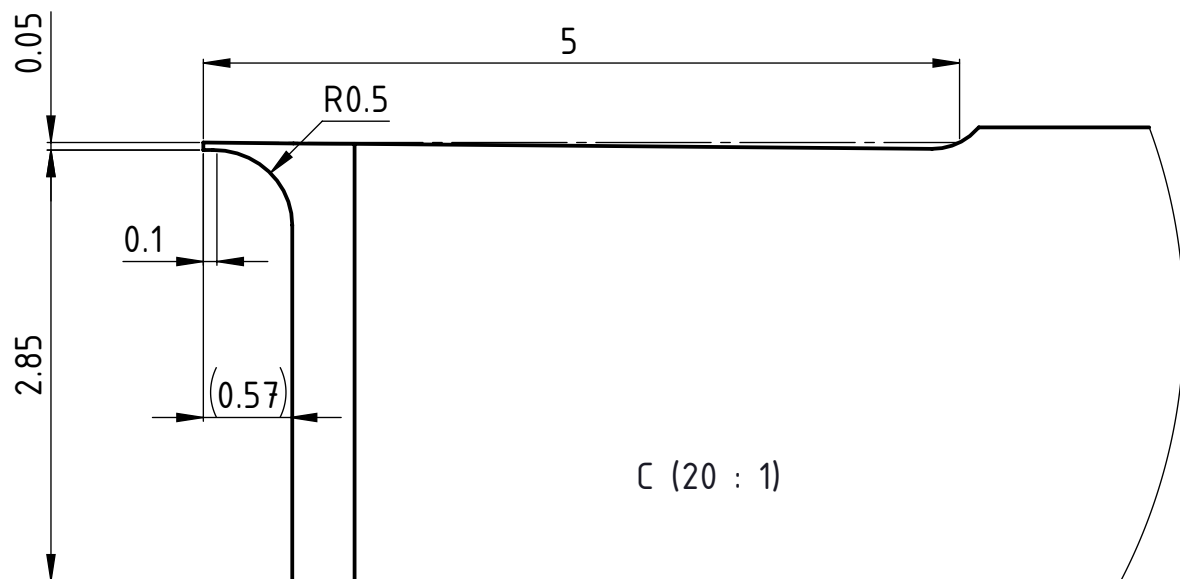
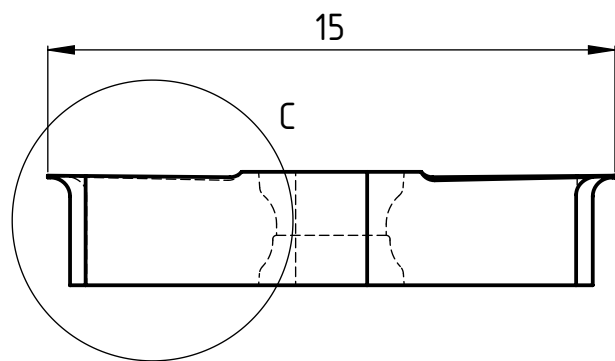
1 2 3 4 5 6

A



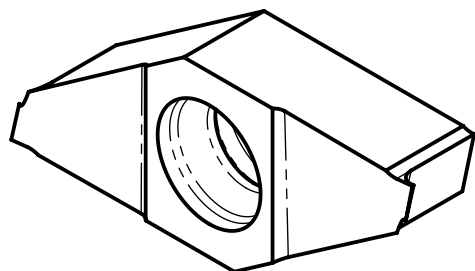
A

B



B

C



C

D

A4-Kunde V7

Linke Ausführung abgebildet, Rechte Ausführung CUT-494-01-Z

Freigegeben von am

C.Fabozzi am 16.12.2014

erstellt von am

P. Jozic am 16.11.2014

Beschreibung

Multidec-Cut Wendepatte

Artikel Bezeichnung

1610-0.05-0.1 L

UTILIS[®]

Tooling for High Technology

Zeichnungsnummer

CUT-494-02



A4

Index

A