

1 2 3 4 5 6

A

B

C

D

A

B

C

D

A (100 : 1)

X (15 : 1)

30°

h0.216 min.

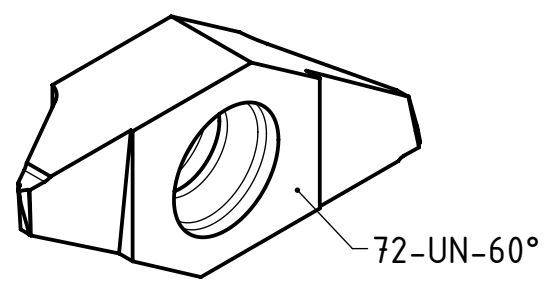
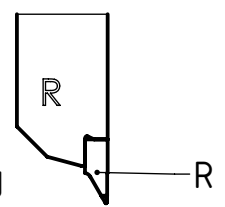
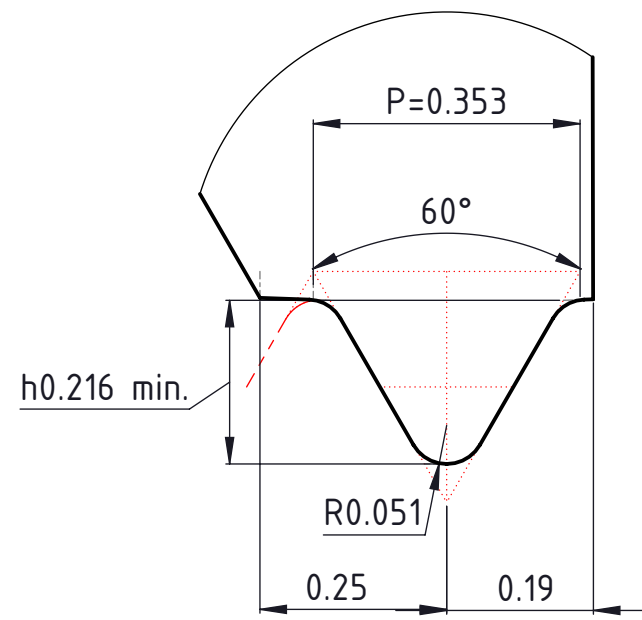
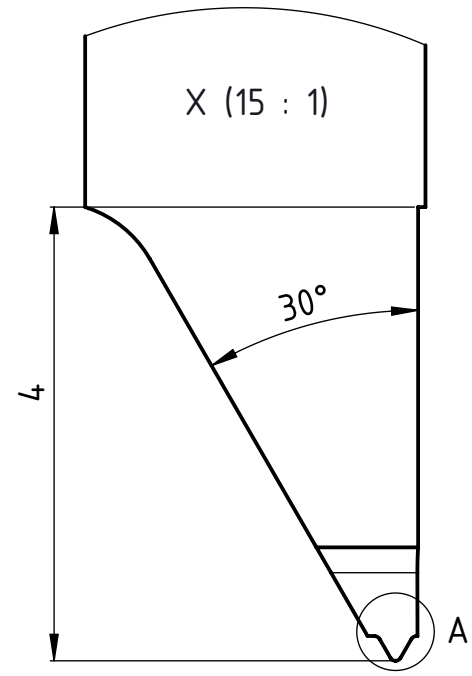
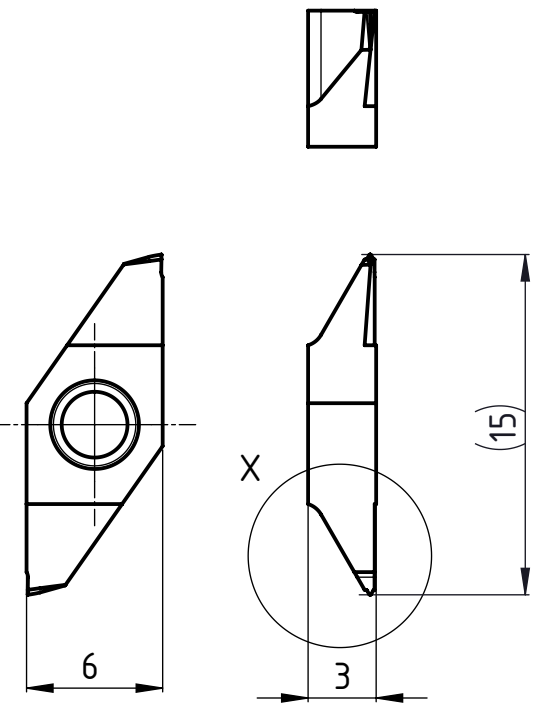
P=0.353

60°

R0.051

0.25



0.19



Rechte Ausführung
Execution droite
Right execution

A4-Kunde V7

Norm ANSI/ASME B1.1 (Tol.2A/2B 3A/3B)

Freigegeben von am T.Weilenmann am 30.11.2020	Beschreibung multidec-CUT Wendepatte	 Tooling for High Technology Zeichnungsnummer CUT-938-03-09	 A4 Index B
erstellt von am C.Fabozzi am 21.03.2020	Artikel Bezeichnung 1606-72 UN-60 VP R		