

1 2 3 4 5 6

A

A

B

B

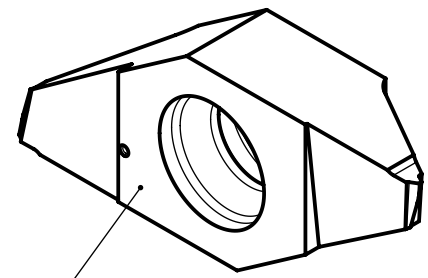
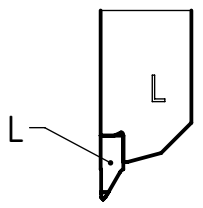
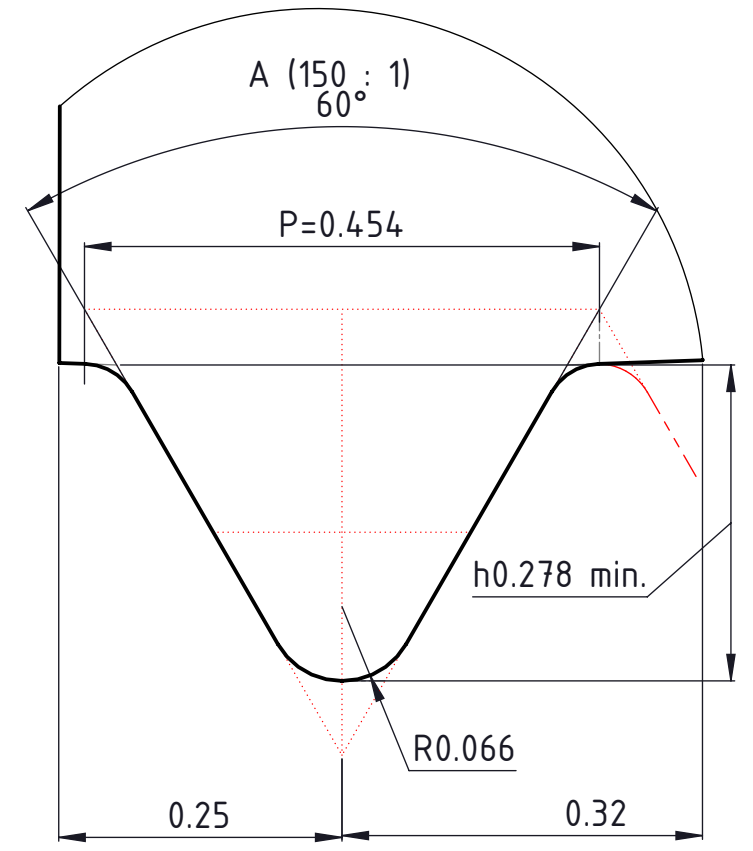
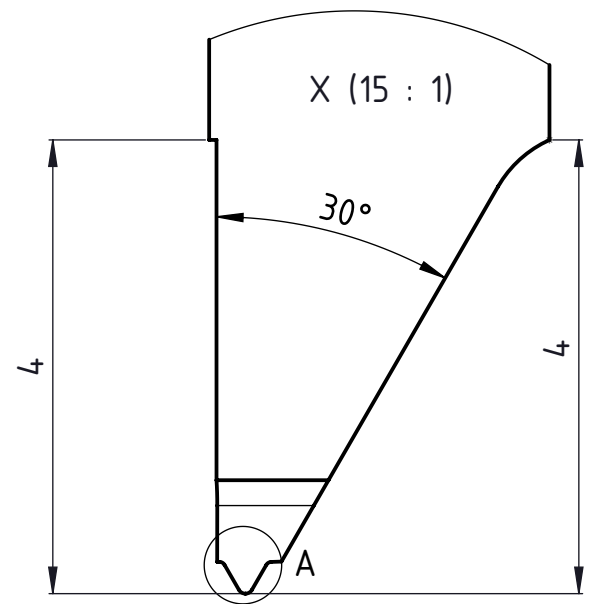
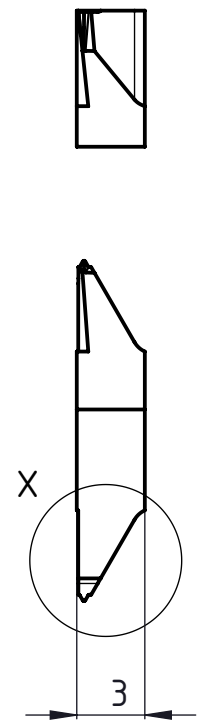
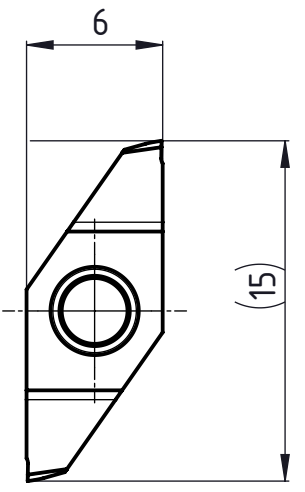
C

C

D

D

A4-Kunde V7



64-UN-60°

Linke Ausführung  
Execution gauche  
Left execution

Norm ANSI/ASME B1.1 (Tol.2A/2B 3A/3B)

Freigegeben von am T.Weilenmann am 02.12.2020
erstellt von am C.Fabozzi am 21.03.2020

Beschreibung multidec-CUT Wendepatte
Artikel Bezeichnung 1606-56 UN-60 VP L

<b>UTILIS</b> <small>Tooling for High Technology</small>
Zeichnungsnummer CUT-938-03-18

A4 Index B